



REFLECTING ART IN CERAMIC

PORTFOLIO

Corporate Office:-

Off No 1 & 2, First Floor, Dharma Gold Complex
8-A National Highway
Morbi-363642 (Guj) India



mail: - morbiho@saverainternational.com

call/Chat: - +91-7990190009

web:- www.saverainternational.com

COMPANY OVERVIEW



Company History

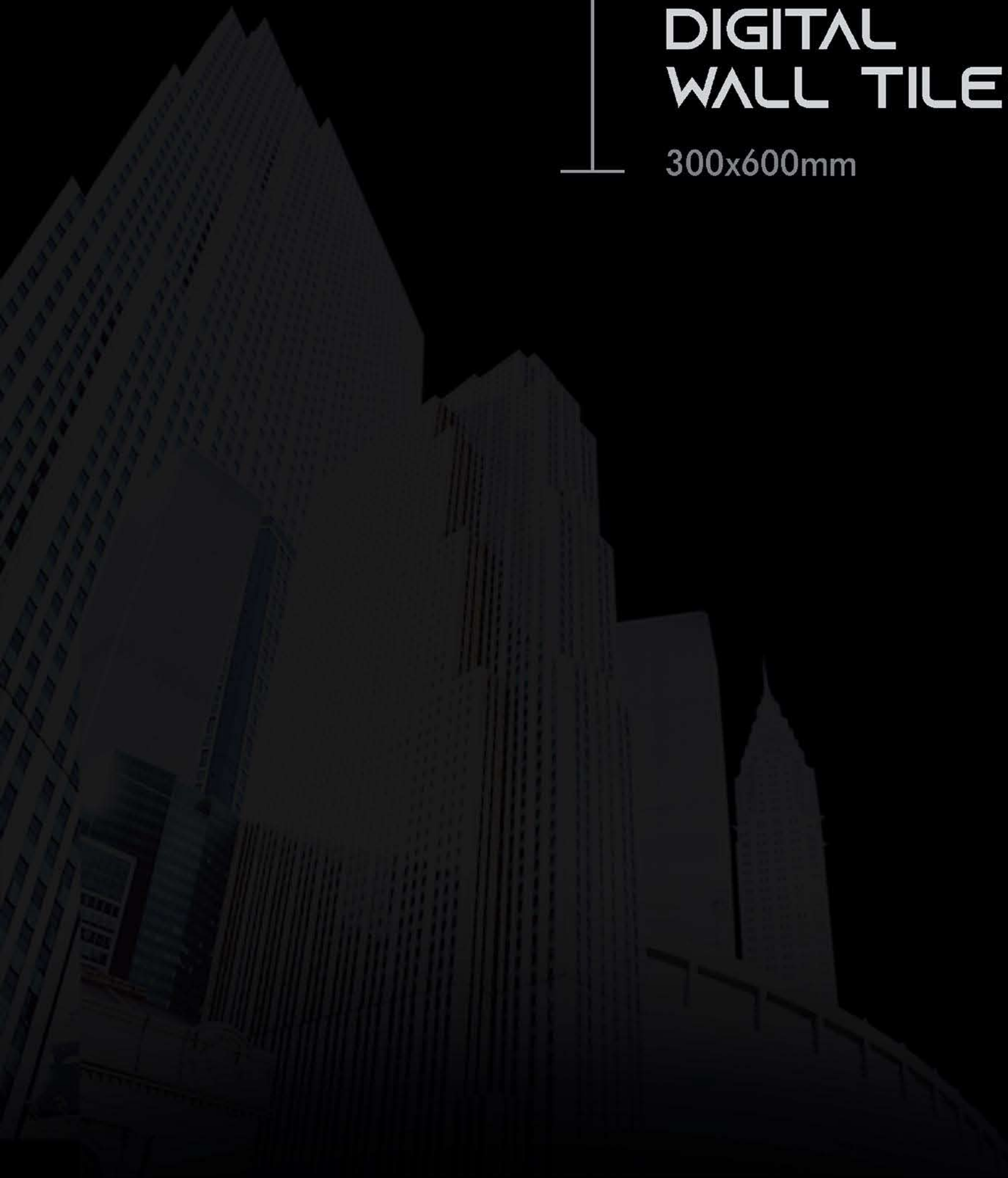
"knowledge is Worthless if it is not having the direction of customer satisfaction by offering value for money". Keeping this philosophy in our mind & zeal to serve the society in our heart, production becomes a creation at our group of companies. The same is reflected in our end products which are certified with ISO 900a:2015 & CE marking. "Assis people to achieve their objective & in return, you will achieve yours". We believe that our success lies in the success of our business partners. We put every effort to help our business associates to achieve the highest level of satisfaction & monetary benefits by quality products, competitive prices & above all, a clean policy. Company management is keeping an eagle's eye on the changing vogues to meet & beat every challenge be it quality, design or price.

Wide range of
wall tiles that reflect
every culture

The wall tiles by our company are so diverse that it enables to reflect every culture with its beautiful and unique designs. These wall tiles are perfect to add vivaciousness to the aura of a space.

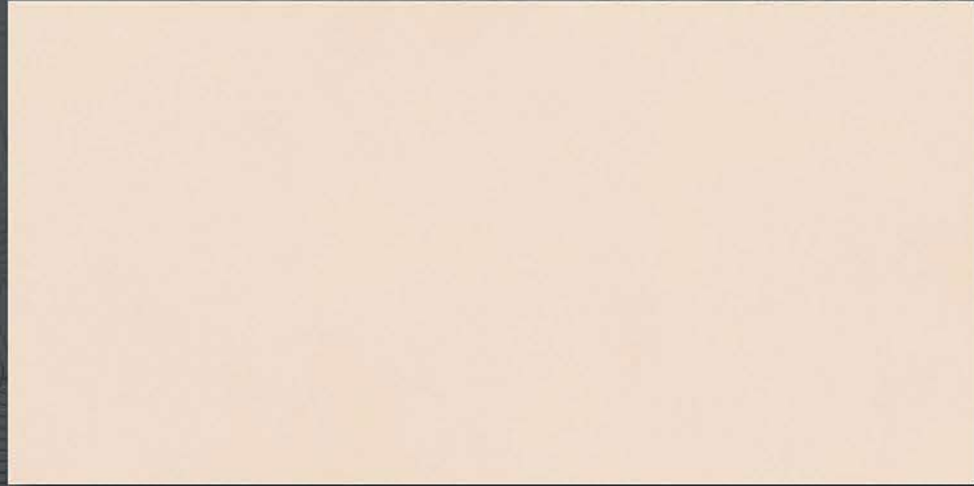
DIGITAL WALL TILES

300x600mm





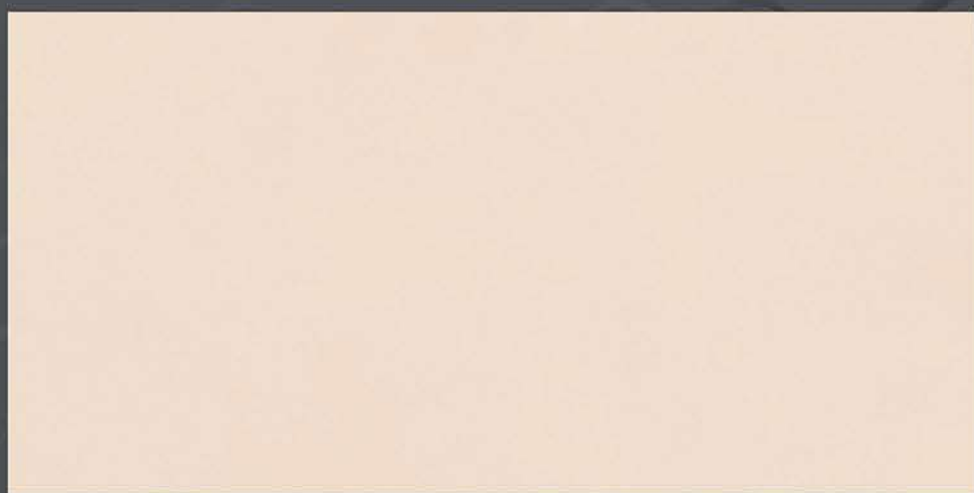
DESIGN No : 24246



LT



HL-3



LT



300x600mm

**DIGITAL
WALL TILES**

GLOSSY



DESIGN No : 24259



DK



HL-1-(R)



DK



300x600mm

**DIGITAL
WALL TILES**

GLOSSY REACTIVE



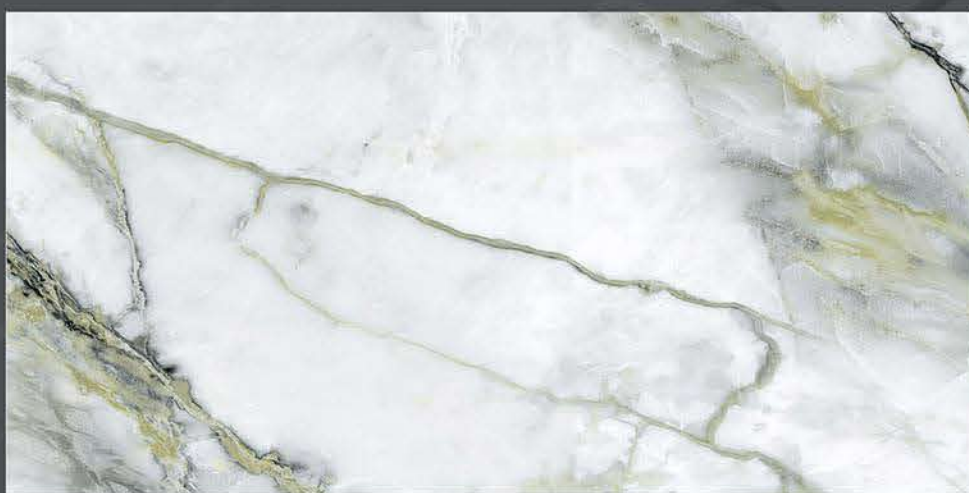
DESIGN No : 24259



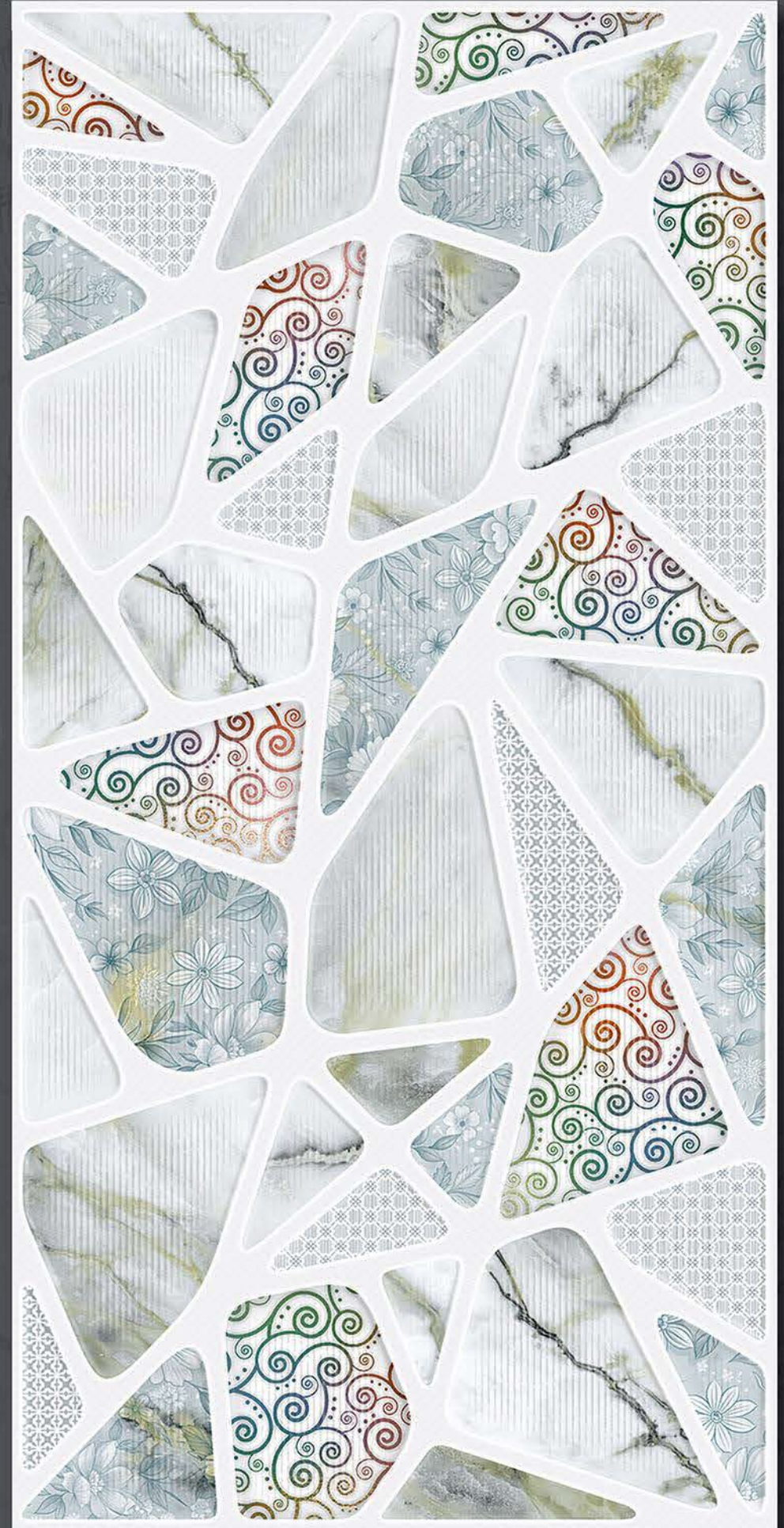
DK



HL-2-(R)



DK



300x600mm

**DIGITAL
WALL TILES**

GLOSSY REACTIVE



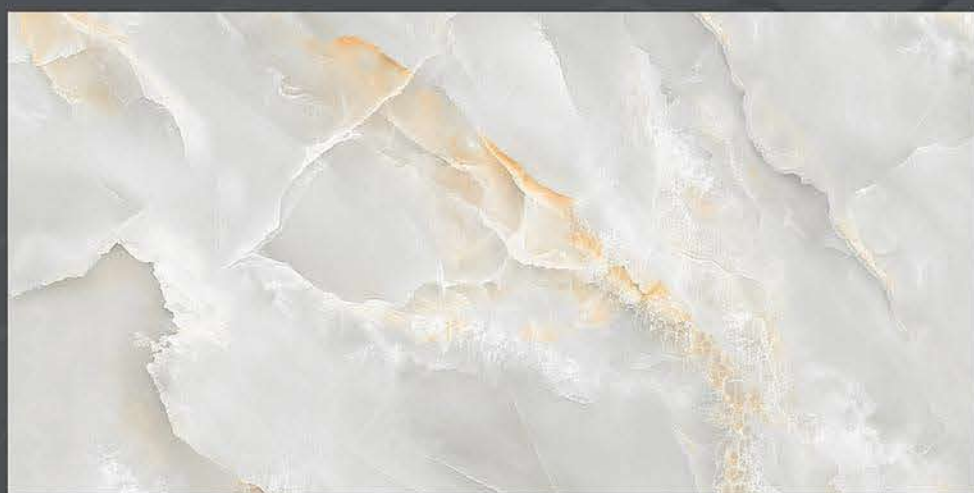
DESIGN No : 24260



DK



HL-1-(R)



DK



300x600mm

**DIGITAL
WALL TILES**

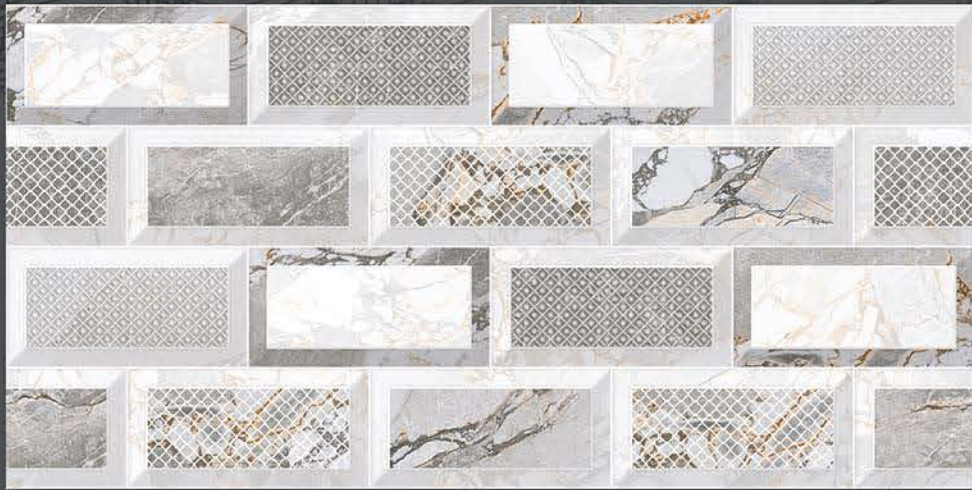
GLOSSY REACTIVE



DESIGN No : 24261



LT



HL-1-(R)



DK



300x600mm

**DIGITAL
WALL TILES**

GLOSSY REACTIVE

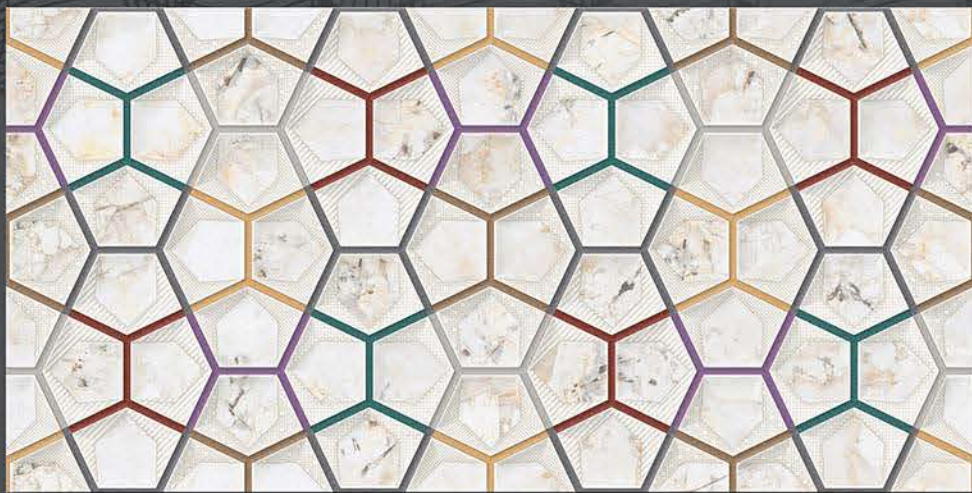




DESIGN No : 24262



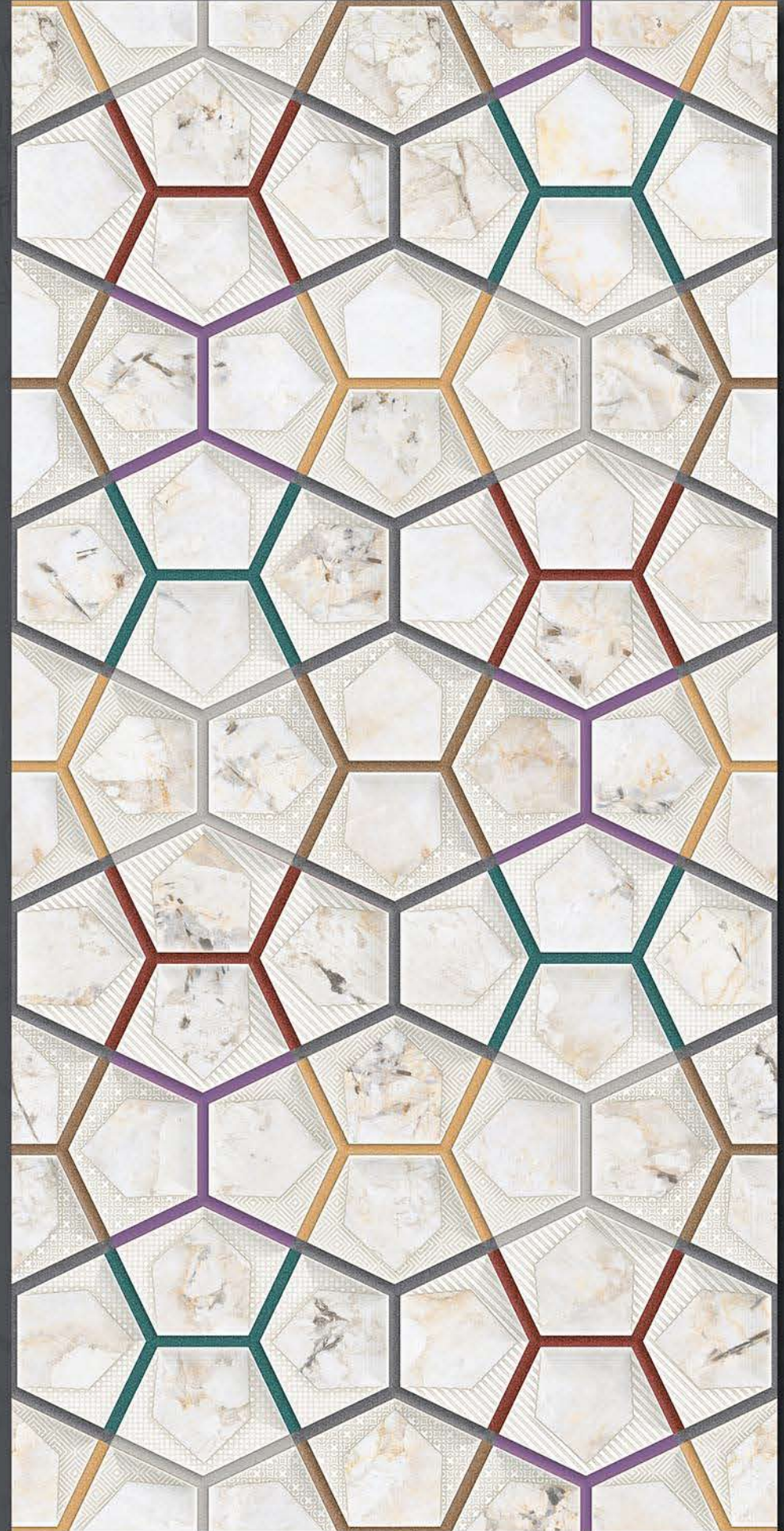
LT



HL-1-(R)



LT



300x600mm

**DIGITAL
WALL TILES**

GLOSSY REACTIVE



DESIGN No : 24262



LT



HL-2-(R)



LT



300x600mm

**DIGITAL
WALL TILES**

GLOSSY REACTIVE



DESIGN No : 24263



LT



HL-1-(R)



DK



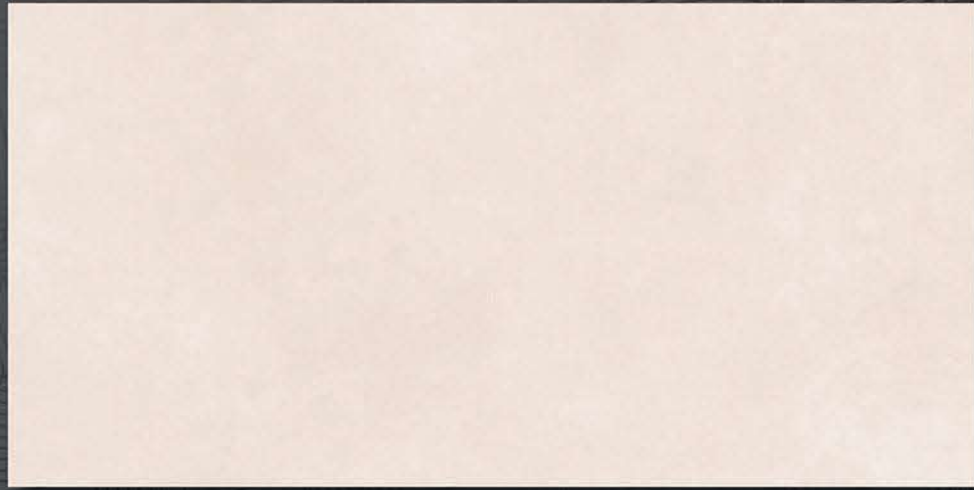
300x600mm

**DIGITAL
WALL TILES**

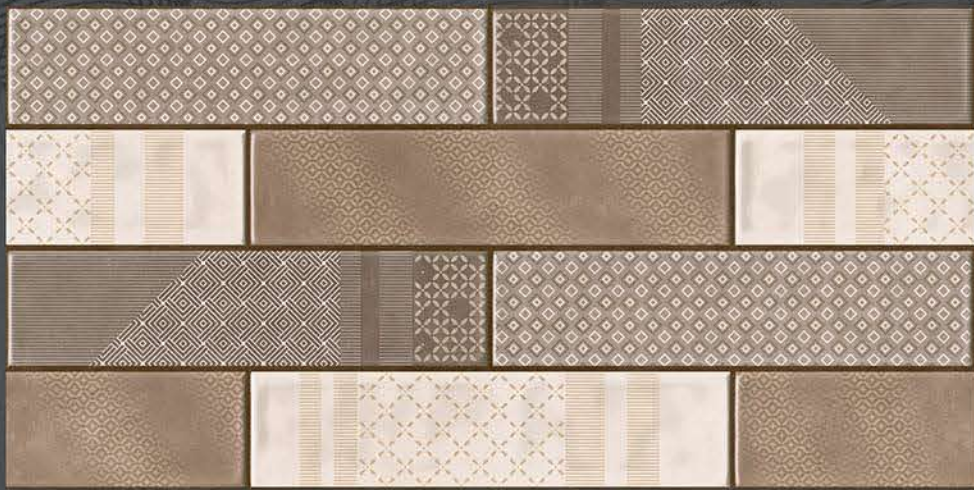
GLOSSY REACTIVE



DESIGN No : 24266



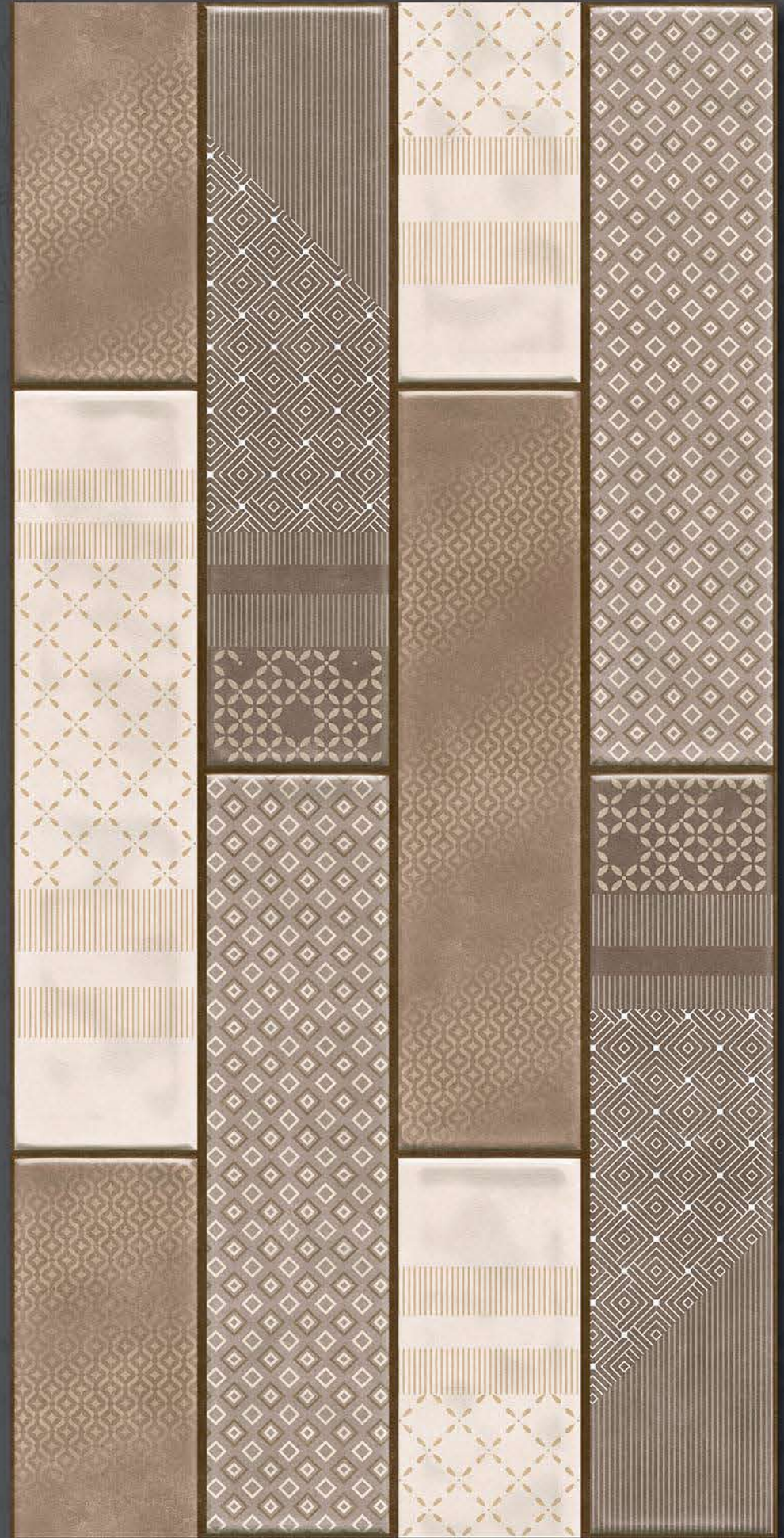
LT



HL-1-(R)



DK



300x600mm

DIGITAL
WALL TILES

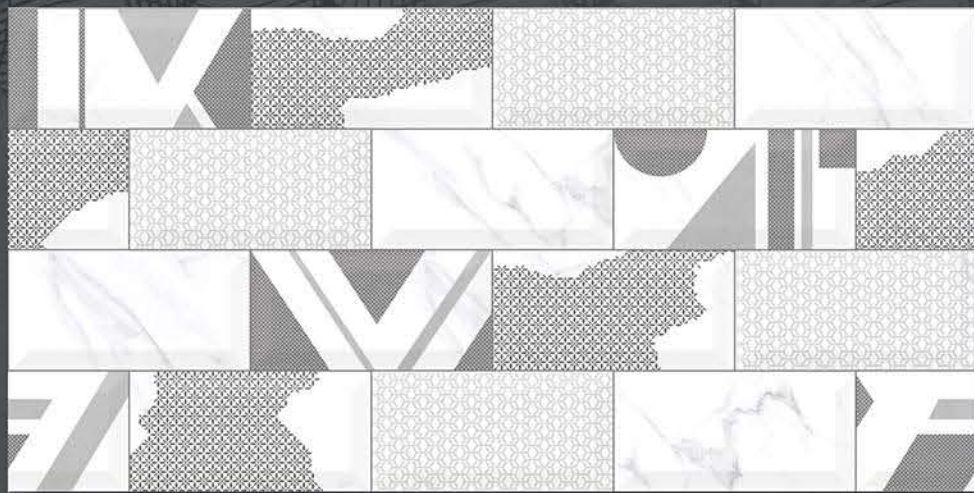
GLOSSY REACTIVE



DESIGN No : 24267



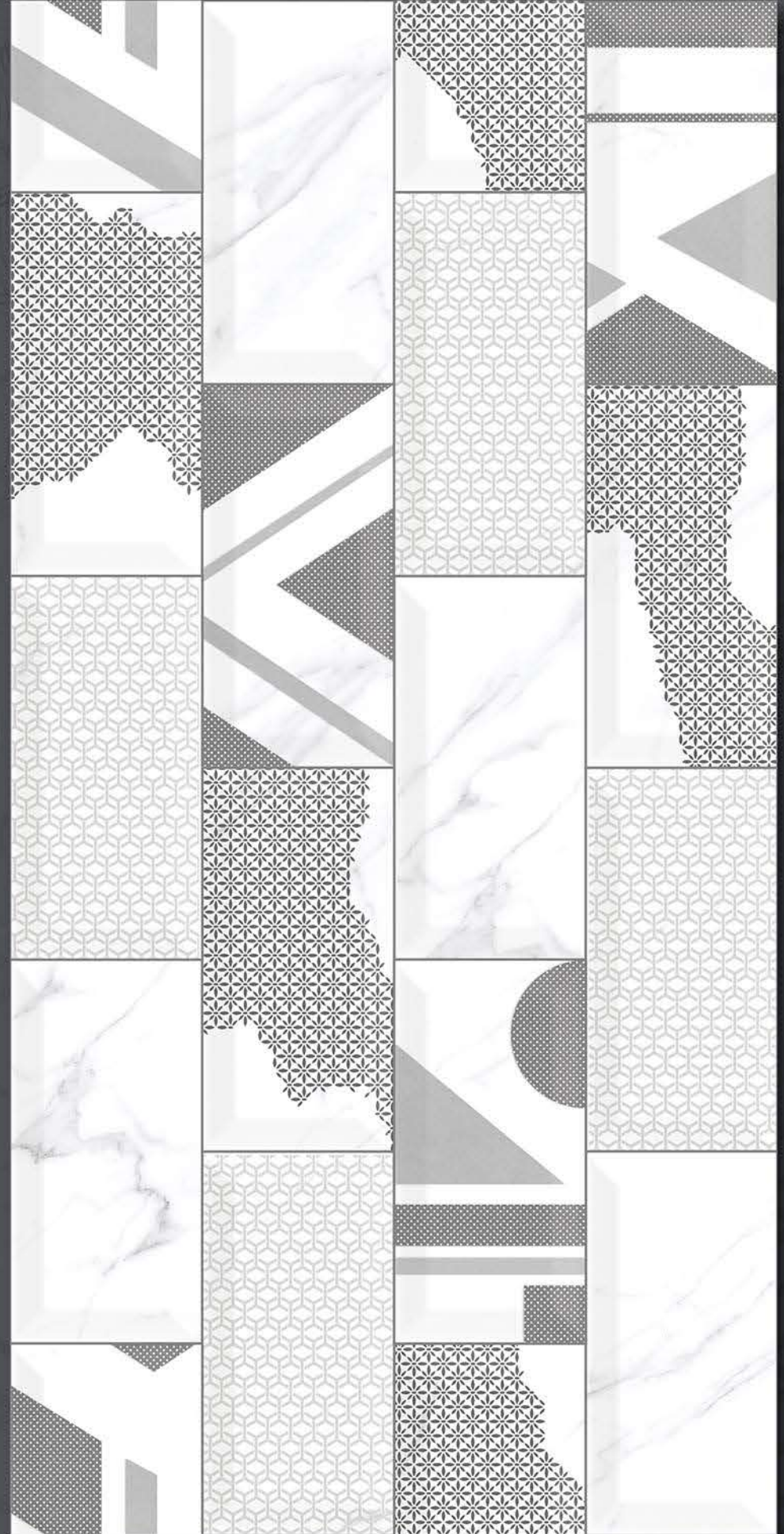
LT



HL-1-(R)



LT



300x600mm

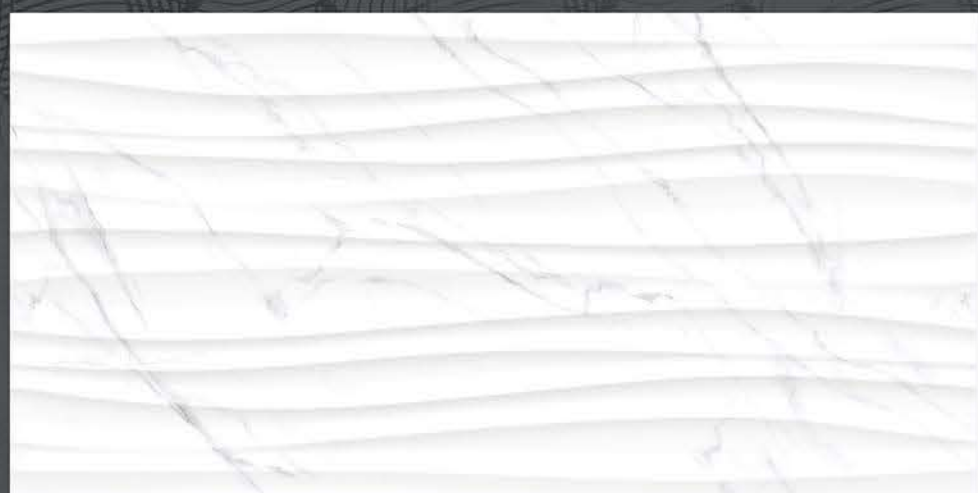
DIGITAL
WALL TILES

GLOSSY REACTIVE

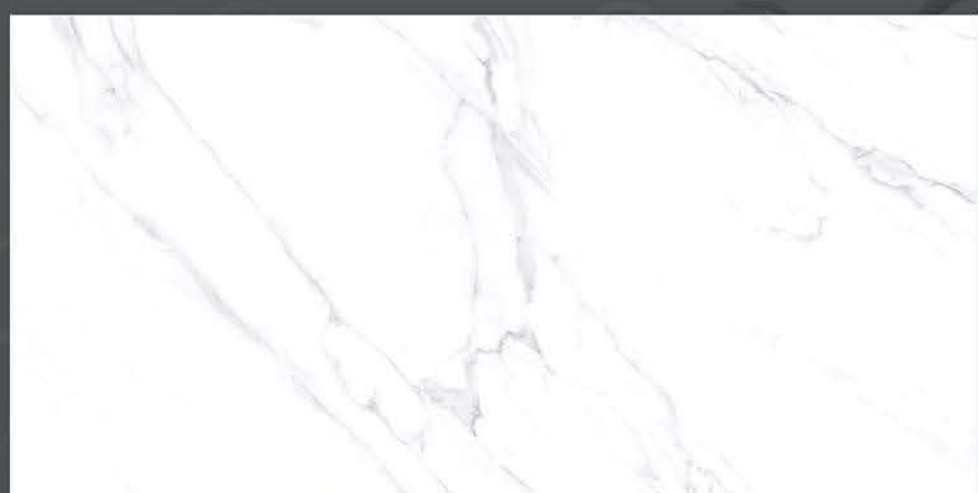
DESIGN No : 24267



LT



HL-2



LT



save
International

300x600mm

DIGITAL
WALL TILES

GLOSSY



TECHNICAL SPECIFICATION FOR DIGITAL WALL TILES

CHARACTERISTICS	EURO STANDARDS EN-159/IS 13753	OUR VALUE
DIMENSION & SURFACE QUALITY		
1. Dimension & surface Quality 2. Deviation in Thickness 3. Straightness of sides 4. Rectangularity 5. Surface Flatness 6. Surface Quality	+_0.5% +_0.6 mm +_0.3% +_0.5% +_0.5% Min 95%	+_0.2% +_0.2 mm +_0.2% +_0.3% +_0.3% Min 96%
Physical Properties		
1. Water Absorption 2. Bending Strength 3. Scratch Hardness(Mohs) 4. Crazing	> 10% > 150kg / Cm2 Min 3 1 Cycle	14-17% 200-250 kg / Cm2 Min 3 No Crazing at 5 Cycle
Chemical Properties		
1. Staining resistance 2. Household Chemical	Min Class 2 Min Class B	Resistance to all Acids and Alkalies & Household Chemicals, Except Hydro flouric Acid
Thermal Properties		
1. Thermal Shock 2. Thermal Expansion	Resistant to 10 cycles Max -9E - 06	CONFORMS CONFORMS

Packing Detail

Dimension (mm)	Thickness (mm)	Tiles Per Box (pcs.)	Area Coverage per Box (Sq.M.)	WEIGHT per Box (kgs.)
300x600	9mm (Approx)	5 Pcs.	0.90 (Approx)	14.000 Kg. (Approx)

Note : Colour shown are as accurate as the limitations of the Printing process will allow. Prospective customers are advised to inspect a sample of the tile before ordering. Every effort has been made to ensure the accuracy of the information given.

However, the company reserves the right to change the specifications without prior notice. Sometime variations in shade of size being inherent to ceramic industry may occur. Before fixing, we advise you to follow the fixing instructions on the carttons of the tiles as no responsibility can be accepted by company once the tiles have been fixed.



SAVERA INTERNATIONAL
A ONE STOP CERAMIC COMPANY

CORPORATE OFFICE: -
OFF NO 1 & 2, First Floor, Dharma Gold Complex
8-A, National Highway
Morbi - 363642
Gujarat - INDIA

contact us
Call / Chat: - +91-7990190009
mail:- morbiho@saverainternational.com
www.saverainternational.com